

# NYC COMPOSTING

CIRCULAR ECONOMY MFG



# Workshop Schedule

**INTRODUCTION**  
NYC COMPOSTING  
Q&A



## Welcome!

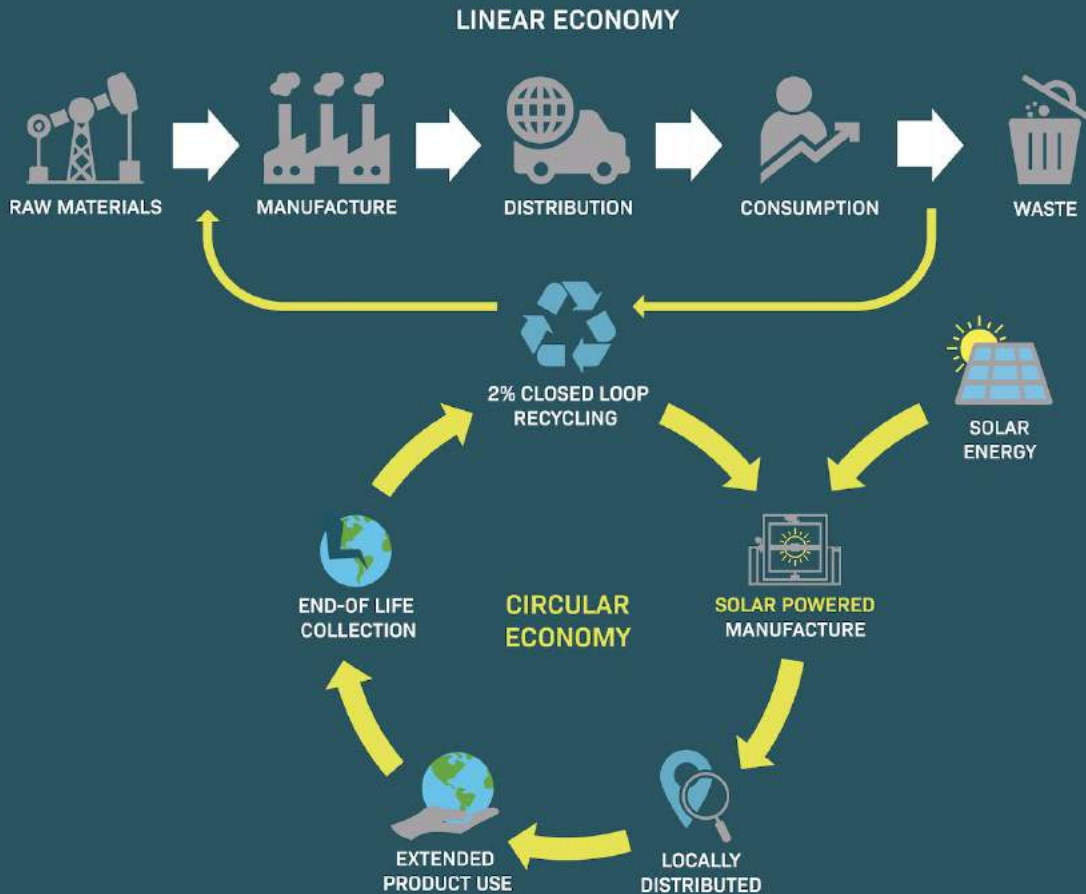
- CEMfg introduction
- LES Ecology Center compost petition

## Kyleen with LES Ecology Center

- Reducing our waste
- Composting Systems, small and medium scale
- Composting with LES Ecology Center: how-to, advice, resources, sites, volunteering
- What happens after? Compost yard and distribution

## Q&A





## Linear vs. Circular

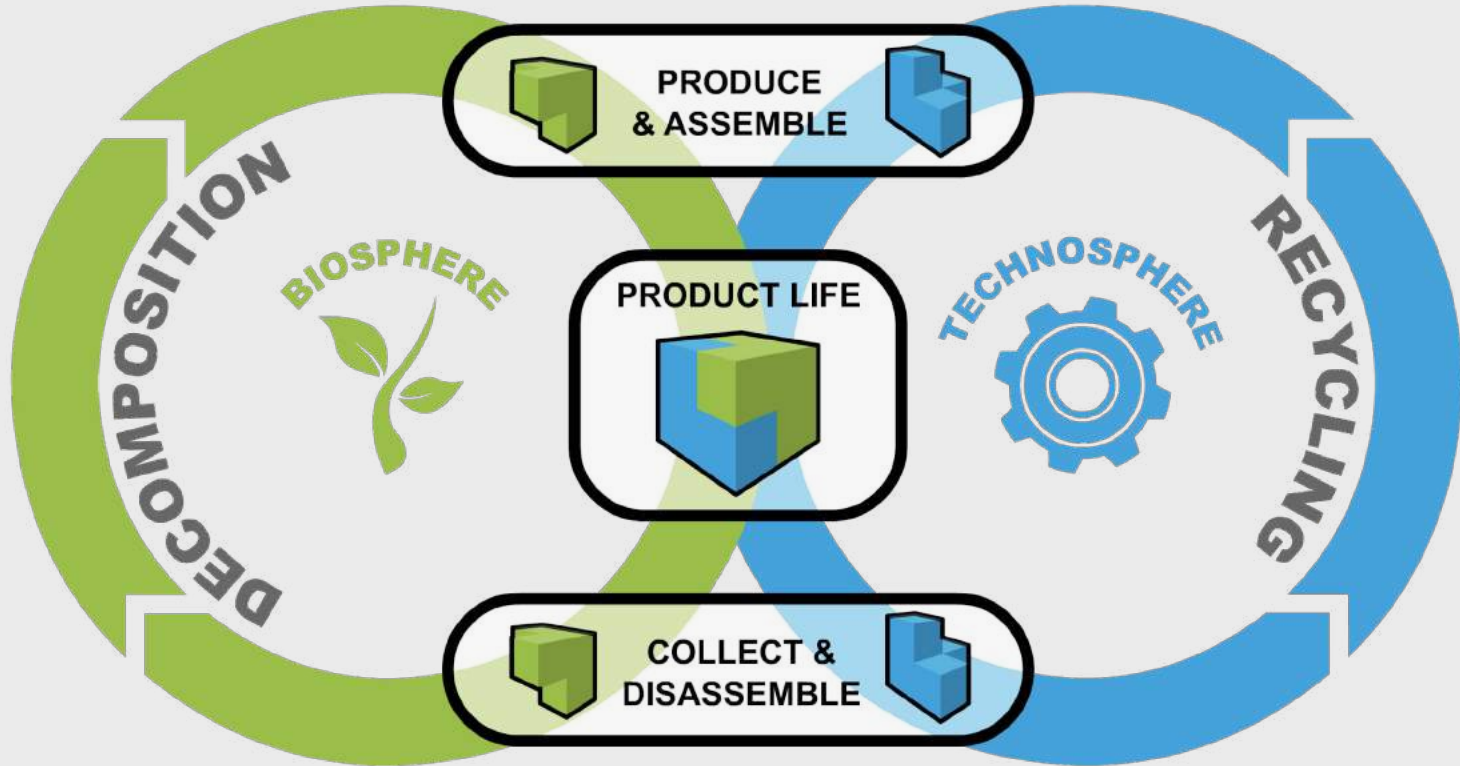
- **Linear Economy**

Materials are collected, made into products, and discarded as waste

- **Circular Economy**

Keep products in use and designs out waste and pollution

# CRADLE TO CRADLE

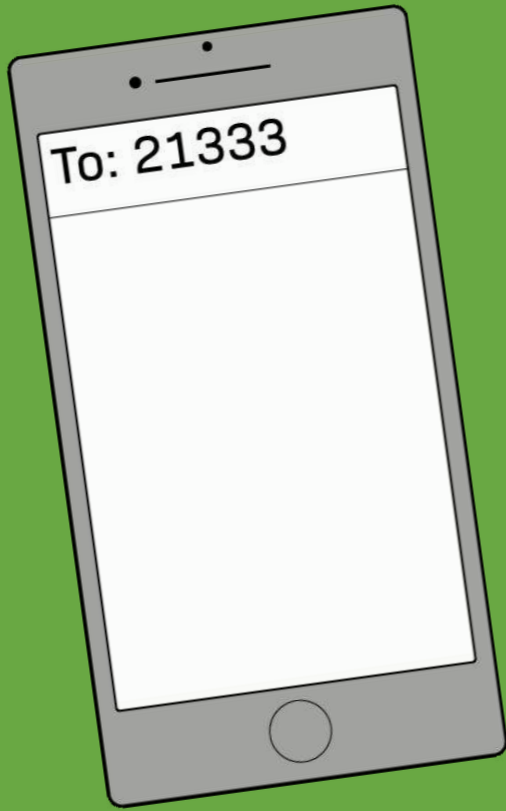




CIRCULAR ECONOMY  
MANUFACTURING



LES  
Ecology  
Center



INTRODUCTION  
**NYC COMPOSTING**  
Q&A

This texting campaign is being  
organized by the -  
Natural Resource Defense Council.

**GROW**<sup>NYC</sup>



Kyleen Sanchez,  
Compost Associate with LES

+



**BIG**  
REUSE



Red Hook Compost

**NYC**  
Compost Project  
Funded by **NYC**sanitation

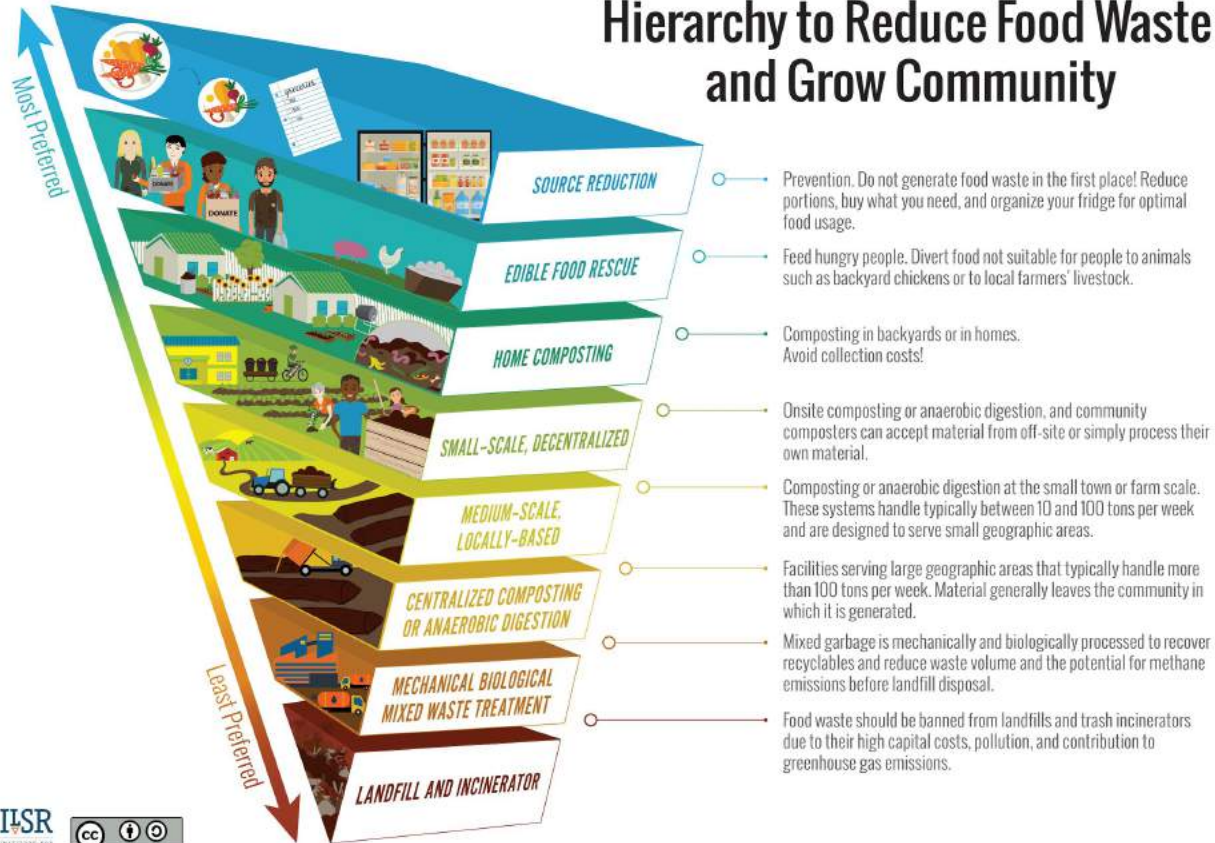


# About the Lower East Side Ecology Center

Mission: The LES Ecology Center (Ecology Center) has pioneered community-based models in urban sustainability since 1987. We provide unique e-waste and composting services, environmental stewardship opportunities, and educational programming to all New Yorkers who want to learn about environmental issues and take responsibility for creating solutions through action.



# Hierarchy to Reduce Food Waste and Grow Community



# Home Composting Systems

Indoor



**Vermicomposting**



**The Cardboard Box Method**

Outdoor



**Tumbler**



**Galvanized metal can**

*(As seen in  
[The New York Times](#))*

# Small-Scale Composting Systems



Community garden  
or Urban Farm

Microhauling services  
*(photo: Reclaimed Organics e-bike)*



Small windrows  
*(photo: BK Rot, Brooklyn site)*

Bokashi



# Medium-Scale Composting Systems



# Medium-Scale Composting Systems



Outreach & Education



Food Scrap Drop-off  
& Local Composting



Technical Assistance

# Composting with LES Ecology Center

## Step One:

Collect your food scraps!

### YES:

Fruit and vegetables, leaves and wood shavings, coffee grounds, paper tea bags and filters, eggshells and nutshells, stale beans, flour, spices, cut or dried flowers, houseplants and potting soil, bread and grains

### NO:

Meat, fish, bones, seafood shells, dairy products, fats, grease, greasy foods, pet feces, litter or bedding, coal or charcoal, diseased or insect infested plants, biodegradable/compostable plastics\*\*



# Composting with LES Ecology Center

**Step Two:**  
Store those scraps!

Tabletop bucket  
with charcoal filter

Reusables  
(yogurt and salad containers)

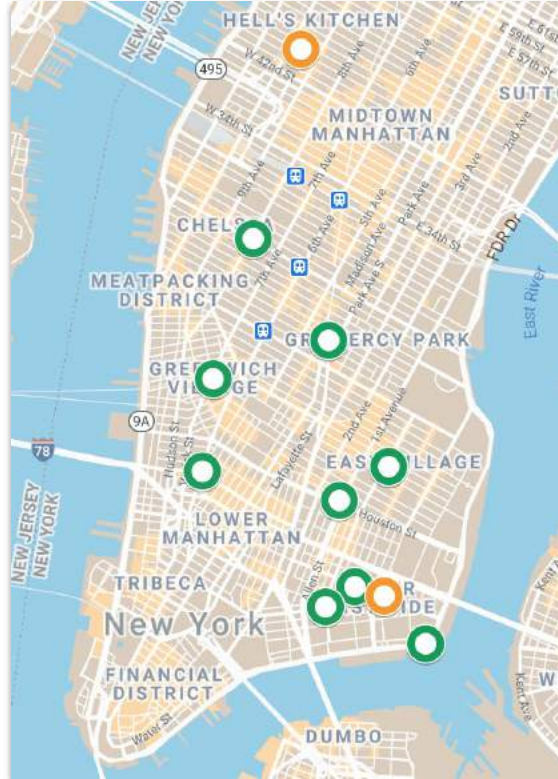
Paper bags (compostable)

\*\*BPI-certified compostable bags





# Composting with LES Ecology Center



**Step Three:**  
Locate a drop-off site near you

[LES Ecology Center website](#)  
[NYC Drop-off tracker](#)

East River Park Compost Yard  
Union Square Greenmarket  
Tompkins Square Park Greenmarket  
1st St/1st Ave  
23rd St/8th Ave  
Spring St/6th Ave  
Clinton St/Grand St  
East Broadway/Rutgers  
Christopher Park  
Mathews-Palmer Park  
Abrons Art Center

# What happens to your food scraps?



**How does composting work?**

# East River Park Compost Yard



# East River Park Compost Yard

Create a bed of browns

Dump and empty  
food scrap barrels

Sort and remove  
contaminants

Top with browns, mix,  
and add to pile



# East River Park Compost Yard

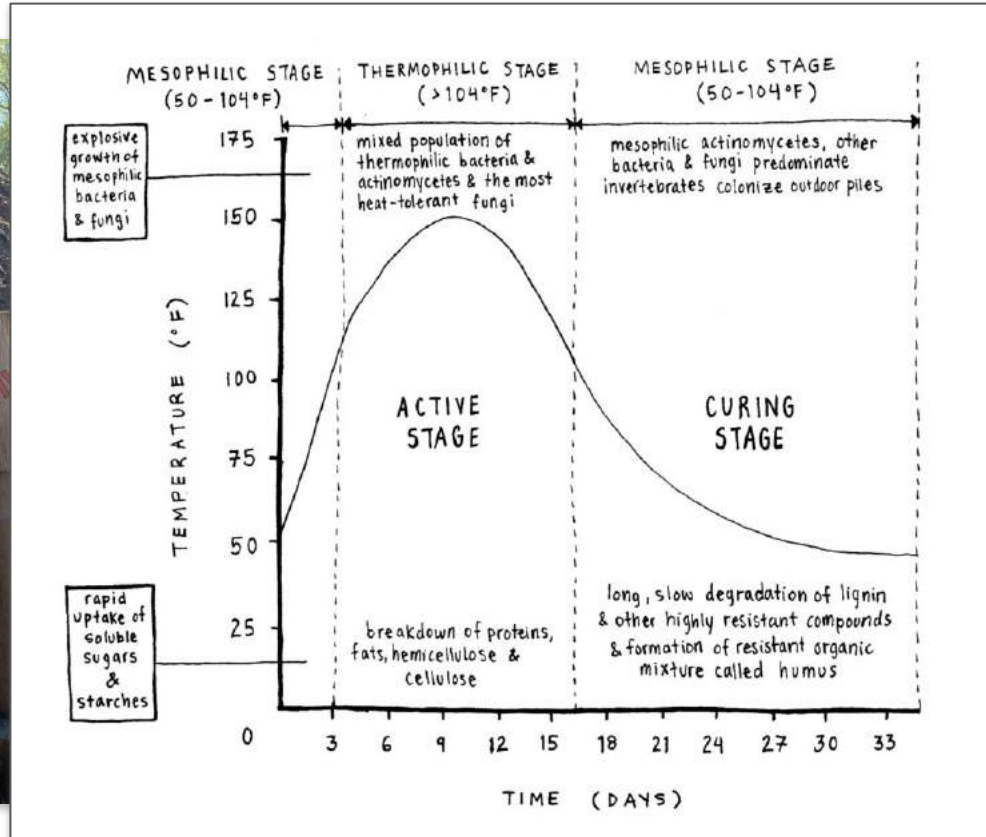


Freshly capped compost pile



Fully cured compost pile

# East River Park Compost Yard



# East River Park Compost Yard



Sifting finished (cured and matured)  
compost for distribution via trommel



# Where does the compost go?



Greenmarket



Donated to community gardens, schools, etc.



Stewardship events

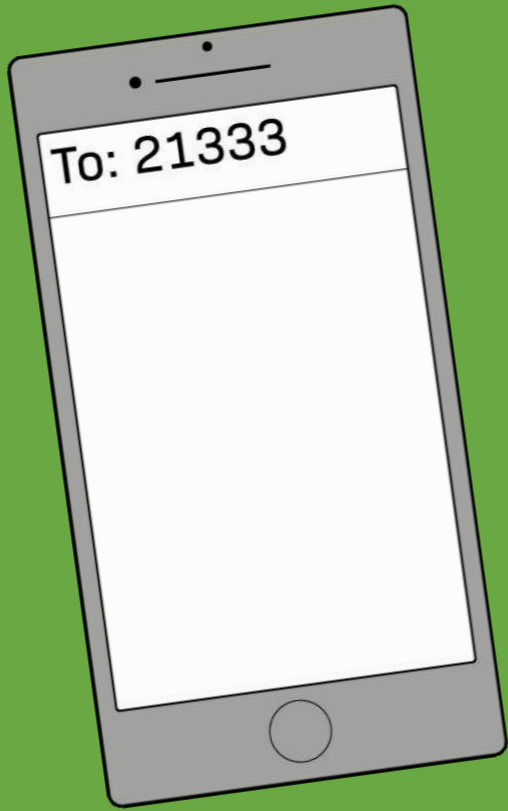




*There's something for you*

*Happy Composting!*





INTRODUCTION  
**NYC COMPOSTING**  
Q&A



CIRCULAR ECONOMY  
MANUFACTURING



LES  
Ecology  
Center



Q&A

CIRCULAR ECONOMY MFG



A person is pouring a dark liquid from a clear plastic bottle into a large grey bin. The bin is filled with food scraps, including orange peels, and greenery. In the background, there are stacks of grey plastic trays.

# THANK YOU

[circulareconomymfg.com/resources](http://circulareconomymfg.com/resources)

CIRCULARECONOMY MFG

